

KINGSTAR 4.2

LOGICLAB

INSTALLATION GUIDE

KS-DOC-x64-0023-R08

Copyright © 1996-2022 by IntervalZero, Inc. All rights reserved.

No part of this document may be reproduced or transmitted in any form or by any means, graphic, electronic, or mechanical, including photocopying, and recording or by any information storage or retrieval system without the prior written permission of IntervalZero, Inc. unless such copying is expressly permitted by federal copyright law.

While every effort has been made to ensure the accuracy and completeness of all information in this document, IntervalZero, Inc. assumes no liability to any party for any loss or damage caused by errors or omissions or by statements of any kind in this document, its updates, supplements, or special editions, whether such errors, omissions, or statements result from negligence, accident, or any other cause. IntervalZero, Inc. further assumes no liability arising out of the application or use of any product or system described herein; nor any liability for incidental or consequential damages arising from the use of this document. IntervalZero, Inc. disclaims all warranties regarding the information contained herein, whether expressed, implied or statutory, including implied warranties of merchantability or fitness for a particular purpose.

IntervalZero, Inc. reserves the right to make changes to this document or to the products described herein without further notice.

Microsoft, MS, and Win32 are registered trademarks and Windows 10, Windows 8, Windows 7, Windows Vista, Windows XP, and Windows Server 2003 are trademarks of Microsoft Corporation.

All other companies and product names may be trademarks or registered trademarks of their respective holders.

Install KINGSTAR LogicLab	1
Get support	6
Third-party support	6
Online support	6
Before calling technical support	6
The version number of your RTX64 and KINGSTAR software	6
Phone support	7

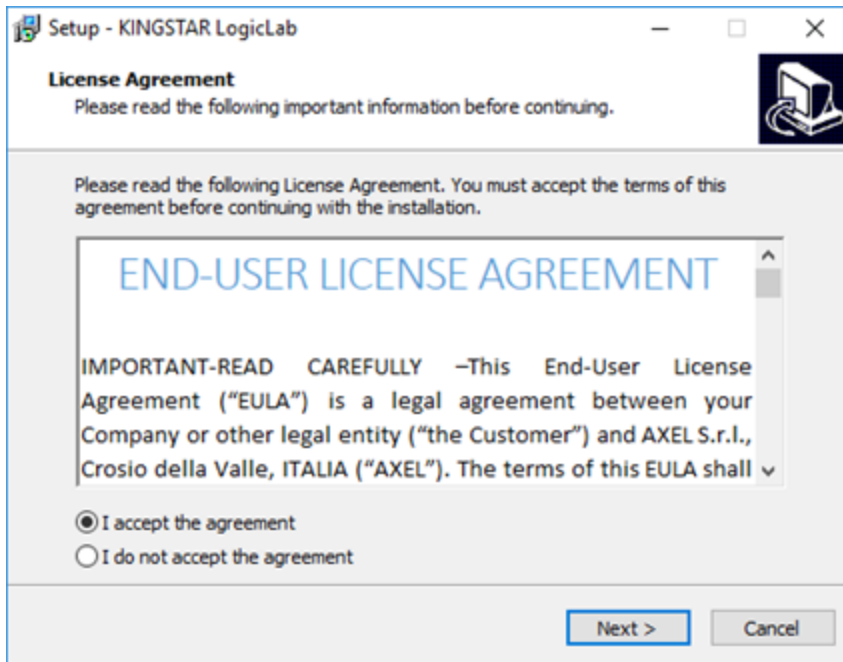
Install KINGSTAR LogicLab

After purchasing KINGSTAR LogicLab, you will receive an email confirmation that includes the activation key and a link to the KINGSTAR LogicLab download page. After downloading KINGSTAR LogicLab, complete the steps that follow to install it.

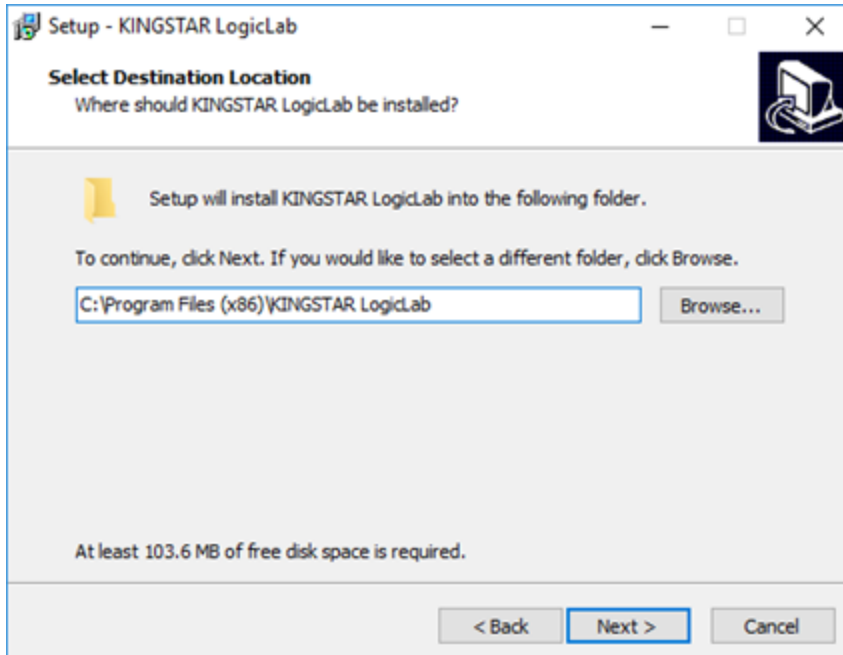
1. Double-click `KINGSTARLogicLabInstaller.exe`.
2. You must have the administrator permission to install KINGSTAR LogicLab. Before the installation begins, **User Account Control** asks if you want the installer to make changes to your device. Click **Yes** to continue the installation.



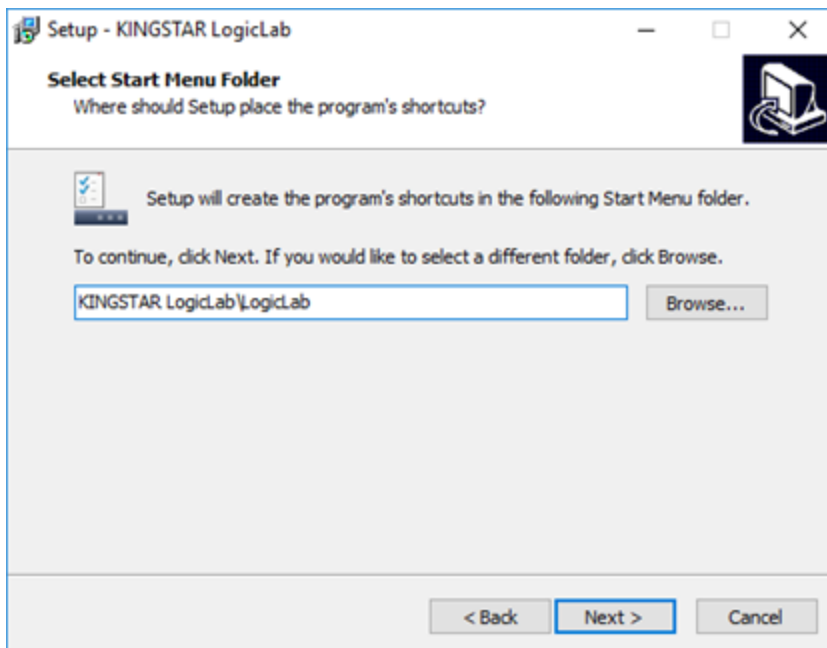
3. Read the End User License Agreement, select **I accept the agreement** and click **Next**.



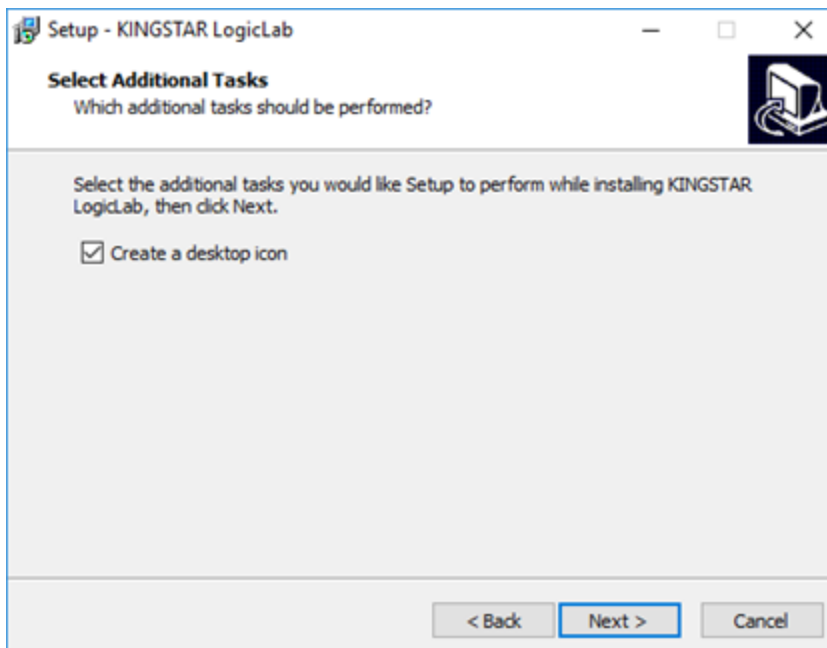
4. Choose the location you want to install KINGSTAR LogicLab. You can accept the default installation path, or click **Browse** to choose a different location. When you finish, click **Next**.



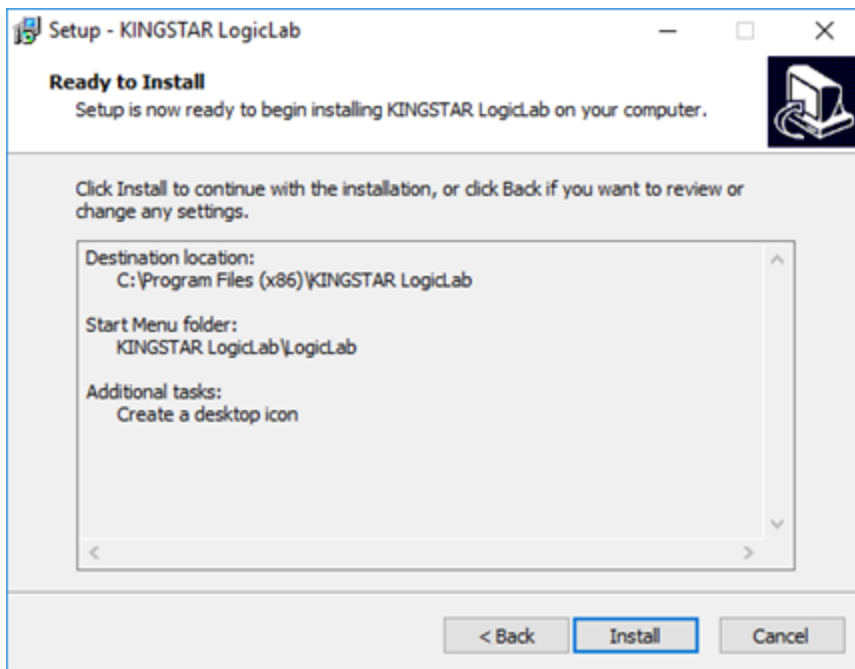
5. Select a path in Start menu to create the LogicLab's shortcut. You can accept the default location, or click **Browse** to choose a different location. When you finish, click **Next**.



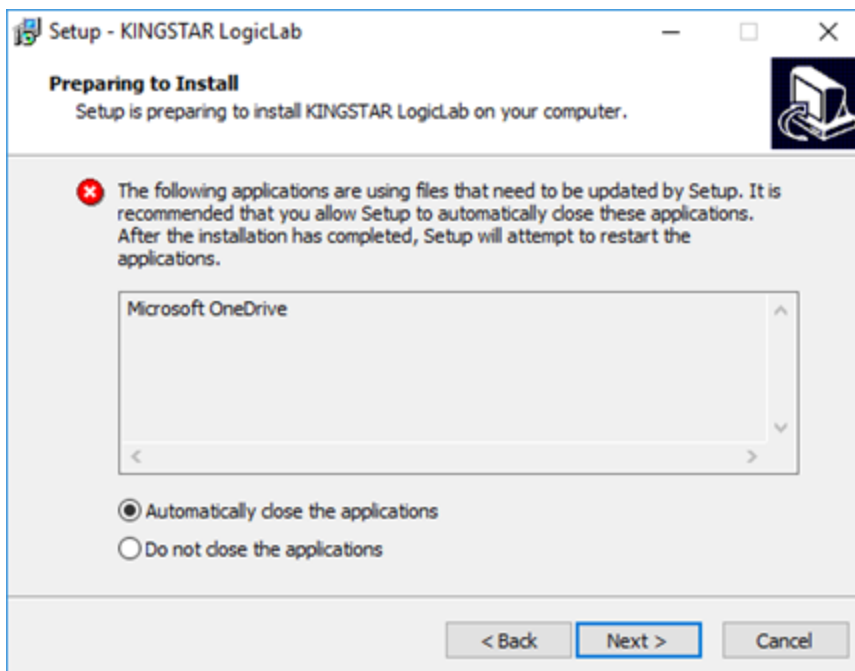
6. You can decide whether to create a desktop shortcut for LogicLab. By default, the shortcut will be automatically created. To proceed, click **Next**.



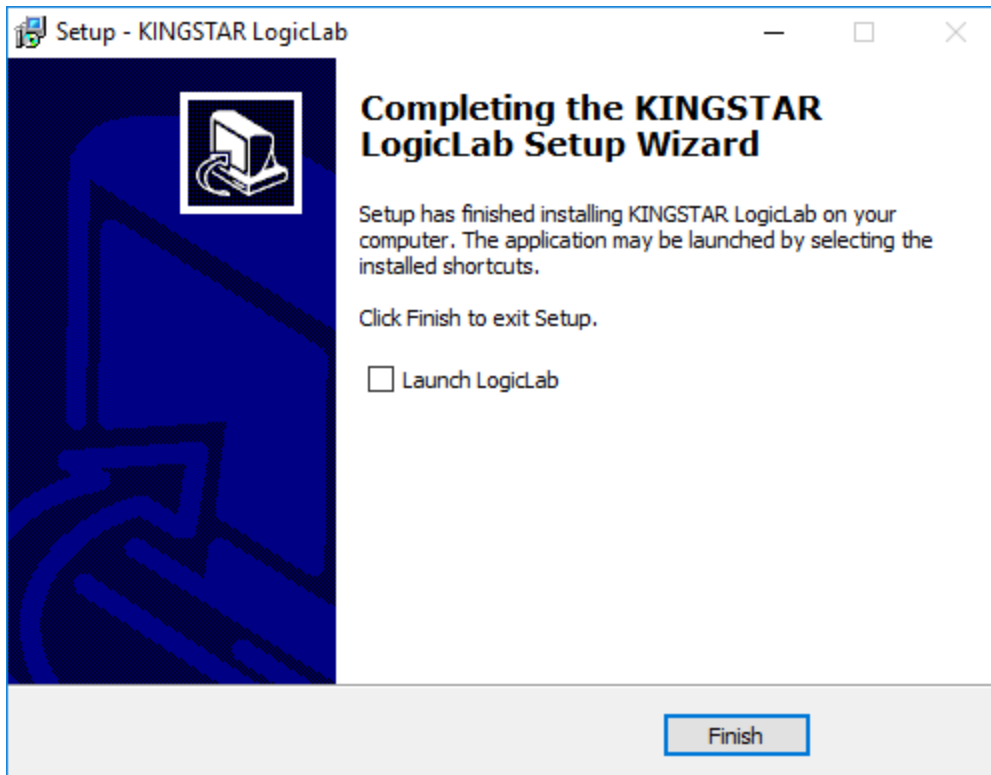
7. Click **Install** to install KINGSTAR LogicLab.



8. If there are other applications running on your computer, LogicLab may ask you to close them before the installation starts. Select **Automatically close the applications** and click **Next**.



9. After the installation is completed, click **Finish**. If you want to start LogicLab after completing the installation, select the **Launch LogicLab** check box.



NOTE: KINGSTAR LogicLab can be installed on a local computer or remote computer. If you install KINGSTAR LogicLab and KINGSTAR PLC Runtime on the same computer, you can use **Scanbus** to add hardware to your PLC project automatically. If you install LogicLab individually on a computer, you can't use **Scanbus**, but you can download your PLC program to the computer that has KINGSTAR PLC Runtime installed and run it remotely. KINGSTAR PLC Runtime is incorporated in KINGSTAR Runtime, but you need PLC Package to use it.

Get support

KINGSTAR offers a number of support options for KINGSTAR users, including third-party, online, and phone support.

Third-party support

If you are a customer who purchased a KINGSTAR product through a third-party reseller, contact the reseller for support.

Online support

The KINGSTAR Customer Support web page is located at:

<http://kingstar.com/support/>


The KINGSTAR support web pages provide electronic access to the latest product releases, documentation, and release notes. You can access the online support ticketing system to submit issues or questions.

Before calling technical support

Please have the following information ready before calling KINGSTAR Technical Support:

The version number of your RTX64 and KINGSTAR software

To obtain the RTX64 version number:

1. Click Start  > **RTX64 4.2 Runtime** > **RTX64 Control Panel**.
2. In the **RTX64 4.2 Control Panel**, record the **Version** shown in the **Installed Runtime components** area.

To obtain the KINGSTAR version number:

1. Click Start  > **KINGSTAR 4.2 Runtime** > **KINGSTAR Control Panel**. Or, in the notification area, double-click the KINGSTAR icon.

2. In KINGSTAR Control Panel, click **About**.
3. Record the **Version** shown on the page.

Phone support

For technical support related to installing and using KINGSTAR, please call technical support at this number:

+886-2-2556-8117

Hours are Monday – Friday from 9:30 to 17:30, UTC+08:00, excluding holidays.